

**Every household should consider putting together a "go bag" in case there is a need to evacuate. Suggested items:**

Important papers (insurance cards, photo IDs, proof of address, etc.)

Extra set of car and house keys

Checkbook, credit and ATM cards and cash

Bottled water and nonperishable food such as energy or granola bars

Flashlight and extra batteries

Battery-operated AM/FM radio and extra batteries

A two-week supply of medication

First-aid kit

Comfortable shoes, two changes of clothes, and lightweight raingear

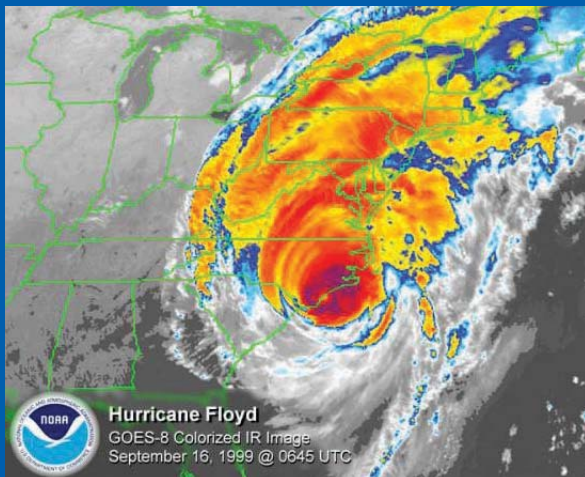
Blankets or sleeping bags

Contact and meeting place information for your household

Child care supplies or other special care items

Personal items including books, games, or toys

*Pack as many items beforehand as possible so you can add what you need and leave quickly*



**Additional Resources:**

- Westchester County OEM:  
[www.westchestergov.com/emergserv/oem.htm](http://www.westchestergov.com/emergserv/oem.htm)
- New York State Emergency Management:  
[www.nysemo.state.ny.us](http://www.nysemo.state.ny.us)
- FEMA "Are You Ready" Guide:  
<http://www.fema/areyouready/>
- National Weather Service, National Hurricane Center:  
<http://www.nhc.noaa.gov/>
- American Red Cross:  
<http://www.redcross.org>

**If you give us your e-mail and/or cell phone number, we can contact you directly in case of a hurricane or other emergency.**

**Sign up at [www.westchestergov.com/cens](http://www.westchestergov.com/cens)**



**Westchester County  
Department of Emergency Services**

**Office of Emergency Management**

200 Bradhurst Avenue  
Hawthorne, New York 10532

Phone: (914) 864-5450

Fax: (914) 864-5434

Preparing For a Hurricane:  
**ARE YOU READY?**



Hurricane Floyd

## A Message From County Executive Andy Spano

Westchester County is vulnerable to hurricanes and tropical storms with its extensive coastline along the Long Island Sound and Hudson River. These storms, powered by heat from the sea, carry winds exceeding 74 miles per hour and can cause extensive damage, especially to low-lying coastal areas.

Although Westchester hasn't seen a Category 3 or higher hurricane since 1985 when Gloria battered the coast, it's important that communities be prepared and residents realize that any hurricane or tropical storm can be dangerous.

In recent years in Westchester, the high winds and torrential rains have primarily resulted in heavy flooding and fallen trees and power lines. However, based on current weather patterns, the National Weather Service predicts that the next several years will show increased hurricane activity. Residents throughout the County, especially those living in coastal communities, should have an emergency plan and know what they would do if an evacuation of the area were necessary.



## Watches -- Warnings -- What to Do

A **Hurricane Watch** is issued when hurricane conditions are a *real possibility* for the area within 24-36 hours.

### What You Should Do:

- Monitor storm's progress on radio or TV.
- Get battery-powered radio and flashlight.
- Make sure you have sufficient canned food, first aid supplies, drinking water and medication on hand.
- Fuel your car.

### Residents in low-lying areas should also:

- Plan an evacuation route and destination and be prepared to evacuate upon the recommendation of local officials.
- Know how and when to turn off the water, gas and electricity in your home.
- Secure credit cards and cash. Check your "go bag."
- Make plans to care for your pets because they are not allowed into public shelters for health reasons.

A **Hurricane Warning** is issued when a hurricane is *expected* within 24 hours. Begin precautionary action at once.

### What You Should Do:

- Follow instructions issued by local officials. They will inform you if you have to evacuate.
- Make arrangements for the elderly and others with special needs.
- Secure outdoor objects or bring them indoors.
- Moor any boats securely.
- Turn off propane tanks.
- If conditions are expected to be severe, protect your windows with boards, shutters, or tape.
- Know who to call if your power goes out.
- Plan an evacuation route and destination.

### If You Live in a Low-Lying Coastal Area, You May Be Directed To Evacuate. If so...

- COMPLY IMMEDIATELY!
- Make arrangements to stay with friends or family outside the affected area whenever possible.
- Turn off utilities if instructed to do so.
- If necessary, bring clothing, bedding, bathing and sanitary supplies, medications and your "go bag."

### Hurricane Categories Saffir-Simpson Scale

Category	Winds	Storm Surge
1	74-95 mph	4-5 feet
2	96-110 mph	6-8 feet
3	111-130 mph	9-12 feet
4	131-155 mph	13-18 feet
5	156 + mph	18 + feet

\*Probability is very low for a Category 5 hurricane.

- For evacuees who have no alternative shelter, the County, in coordination with local authorities, will open American Red Cross-managed shelters.

- Notify someone outside of the warning area of your family's plans.

### During the Storm:

- Stay indoors
- Avoid using the phone to keep lines free for emergencies.
- Don't drive as roads may flood quickly and leave you stranded or inundated.

### After the Storm:

DO NOT enter evacuated areas until local officials permit re-entry.

- Stay away from disaster areas. Do not sightsee!
- Avoid loose or dangling wires and report them immediately to the utility company. Assume that *all* downed wires are alive with electricity.
- If you must drive, use caution. Be aware of road and bridge washouts, fallen trees, and storm debris on roadways. **DO NOT DRIVE THROUGH FLOODED AREAS.**
- Advise interested parties that you are safe.
- Use caution when preparing food from your refrigerator or ice chest. Check for spoilage.
- If you evacuated, have your electric, gas and water connections checked before turning them back on. Wait for instructions from officials.
- Be prepared to boil water or use an emergency supply if told to do so.

If you have questions, contact Westchester County Office of Emergency Management (OEM) at (914)864-5450.

